

EVO2[®]

MID PEAK - SLIP RATCHET - NON-VENTILATED

PRODUCT CODE: AJE030-000_00

THE EVO2[®] OFFERS THE MOST ECONOMICAL TOP LEVEL PROTECTION

TECHNICAL
SPECIFICATION

HEAD PROTECTION

INSTRUCTIONS FOR USE

Fit helmet on head and fasten strap to ensure fit

For adequate protection this helmet must be worn with peak facing forward

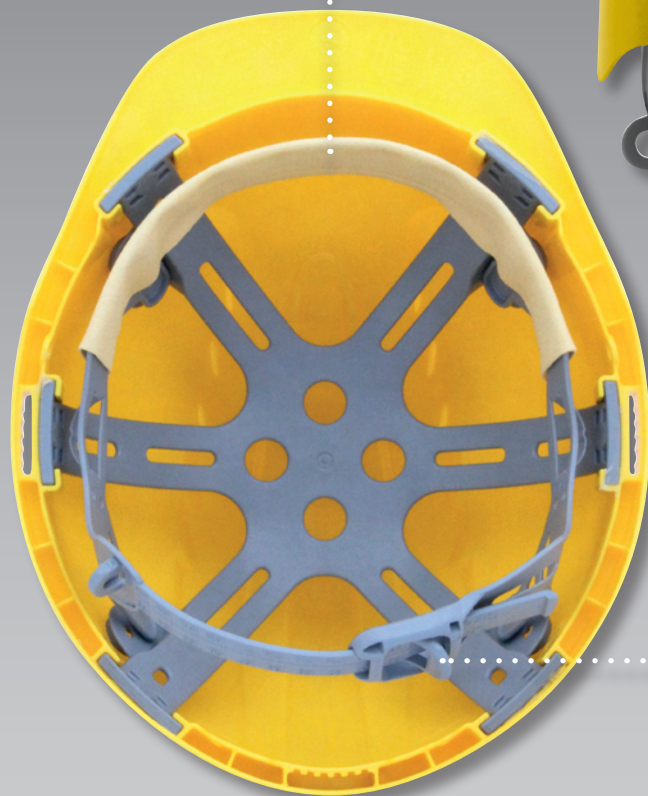
Ensure the helmet is adjusted to the size of the user's head

CHAMLON™ SWEATBAND:

Egyptian cotton core with porous PU coating for maximum sweat absorption. PH neutral, dermatologically tested

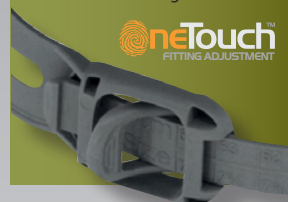
SHELL:

UV Stabilised High Density Polyethylene (HDPE)



SLIP RATCHET:

One Touch™ Slip Ratchet version of the EVO2[®] is so simple to fit that it can be adjusted with just one finger



CLEANING & MAINTENANCE

The unit may be cleaned with soap and warm water and dried with a soft cloth

The helmet should not be cleaned with chemical or abrasive cleaners

The helmet should be stored out of direct sunlight

The helmet should be stored away from chemicals and extremes of temperature

CONFORMITY

Conforms to EN397 & GOCT P 50460-92

EN 50365 for Helmets for use in low voltage installations

EC Certificate Number 0279, issued by BSi Product Certification

Low dome profile

Helmet offers electrical insulation

Compatible with other JSP safety products

Available in a choice of colours

Company personalisation available by printing

EV02[®]

MID PEAK - SLIP RATCHET - NON-VENTILATED

PRODUCT CODE: AJE030-000_00

THE EV02[®] OFFERS THE MOST ECONOMICAL TOP LEVEL PROTECTION

TECHNICAL SPECIFICATION

HEAD PROTECTION



DIMENSIONS OF OUTER PACKAGING

Quantity: 10

Weight: 3.8kg (Approx.)



HEIGHT:
450mm

LENGTH:
580mm

WIDTH:
240mm

HELMET FEATURES

EN STANDARD	EN397 EN50365	Yes Yes
PERFORMANCE	Impact Resistance Electrical Insulation	Yes 50 Joules Yes: EN397 440V EN50365 1000V
TEMPERATURE RESISTANCE	Low Temperature	Yes: EN397 -30°C ГОСТ P 50460-92 -30°C
SHELL MATERIAL	HDPE Recyclable UV Stabilised	Yes Yes Yes
HARNESS MATERIAL	HDPE LDPE	Yes Yes
OPTIONS	Universal Accesories Reflective CR2 option Integrated Eyewear	Yes Yes Yes
HARNESS SYSTEM OPTIONS	JSP 3D Slip Ratchet 6 pts	Yes Yes Yes
CHINSTRAP	4 pts	Yes
LOGO OPTIONS	Front Rear Side MOQ Logo Individual Name	Yes Yes Yes 10 Yes

DIMENSIONS OF HELMET

Size: 530 - 640mm

Weight: 350g (Approx.)



HELMET COLOURS

Insert the following two digit number in place of the dashes in the product code of your desired helmet



01 White 02 Yellow 03 Green 05 Blue 06 Red 08 Orange

LIMITATIONS OF USE

Protection will only be offered if the helmet is fitted correctly

Any helmet subjected to severe impact should be replaced immediately. Do not apply paint, solvents or adhesive labels except in accordance with instructions from the manufacturer

The harness, when in contact with the skin may cause allergic reactions to susceptible individuals. If this occurs leave the hazard area, remove the helmet and seek medical advice

The attention of users is also drawn to the dangers of modifying or removing any of the original component parts, other than as recommended by the manufacturer



MANUFACTURING FOR SAFETY
WWW.JSP.CO.UK



UKSALES@JSP.CO.UK
TEL: +44 (0)1993 826050



Issued 22/05/13, V5